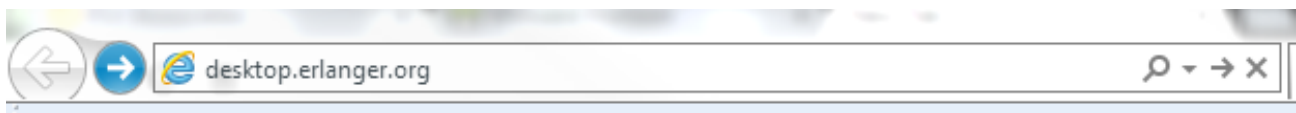


Erlanger Virtual Desktop Setup & Access Guide For Windows

- If you currently access the Erlanger Virtual Desktop (VDI) through the client/icon on your desktop, please try accessing VDI using your existing client. Start at step #19.
- If you have accessed the Virtual Desktop Environment a different way or your client doesn't work, please follow the instructions below to download the most recent client.
- After the VMware Horizon View client is installed, you can access the virtual desktop both inside and outside the Erlanger network.

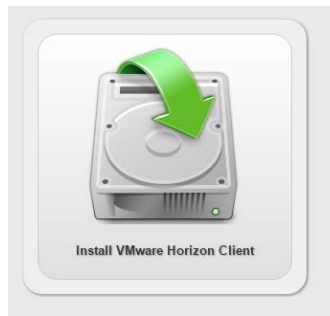
How to Install Client Required for Erlanger Virtual Desktop Access

1. Open your Internet Browser. Type "desktop.erlanger.org" as shown below.



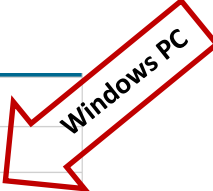
❖ *Note: IE9+, Chrome, Firefox, Safari, or Microsoft Edge required for Install.*

2. You will be directed to the VMware Horizon Client install. Click on the "[Install VMware Horizon Client](#)" button shown below.



3. Click "[Go to Downloads](#)" for VMware Horizon Client for 64-bit Windows if you have a standard Windows Computer.
 - ❖ **Windows XP Users** - If you have Windows XP, click "[Go to Downloads](#)" for VMware Horizon Client for **32-bit** Windows. Select the dropdown box and choose version 3.2.1.
 - ❖ **Windows 7 Users** - If you have Windows 7+, click "[Go to Downloads](#)" for VMware Horizon Client for (32 or 64-bit Windows as applicable). Most modern computers will require 64 bit. Leave the dropdown box at version 3.5.2

VMware Horizon Client for Windows		
VMware Horizon Client for 32-bit Windows	2015-10-15	Go to Downloads
VMware Horizon Client for 64-bit Windows	2015-10-15	Go to Downloads

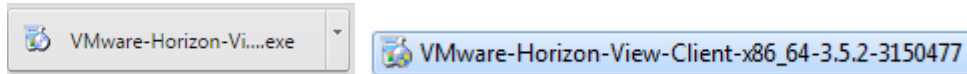


Erlanger Virtual Desktop Setup & Access Guide For Windows

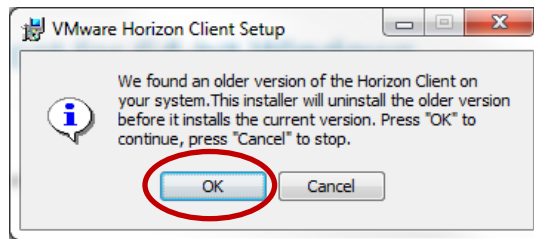
4. Make sure you select the correct version as noted in step 3. Then, click **DOWNLOAD**.



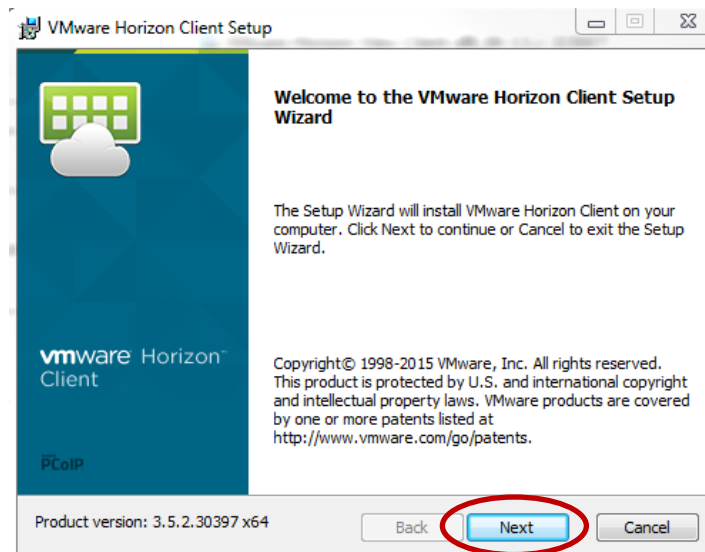
5. Once the install is downloaded, open the install by double clicking it. It will look like the images below depending on your Internet Browser.



6. Click **Run** or **Yes**.
7. Click **OK**

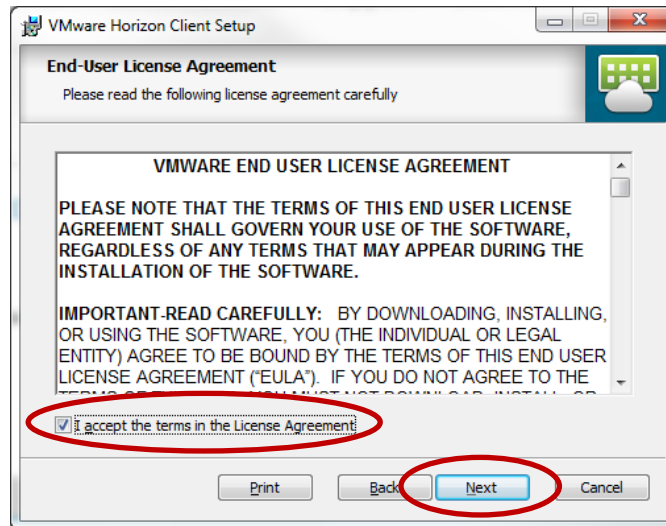


8. Click **NEXT**

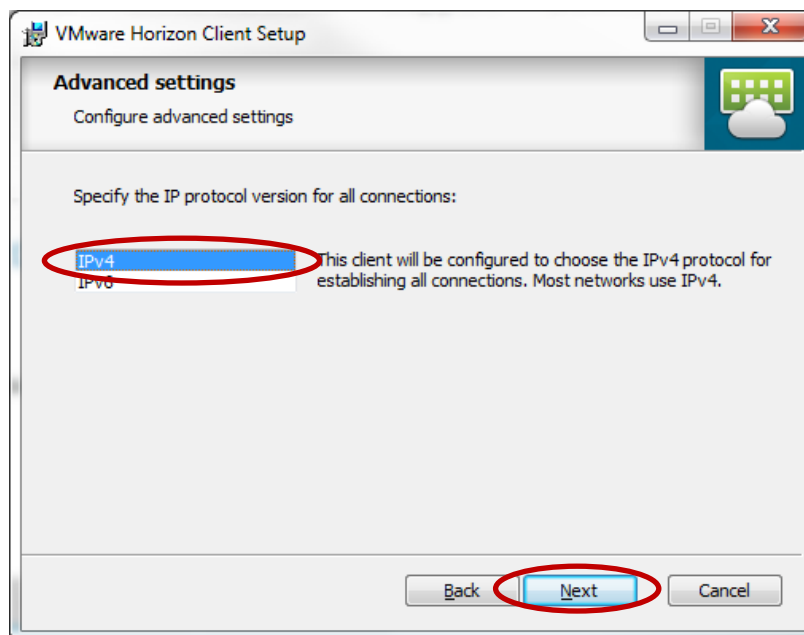


Erlanger Virtual Desktop Setup & Access Guide For Windows

9. Check the button to ACCEPT, then click NEXT.

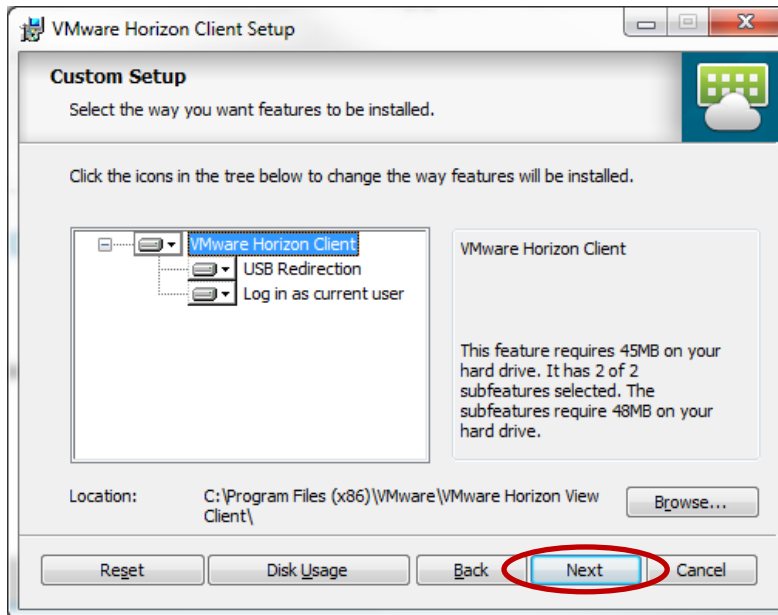


10. Select **IPv4** protocol, and then click **NEXT**.

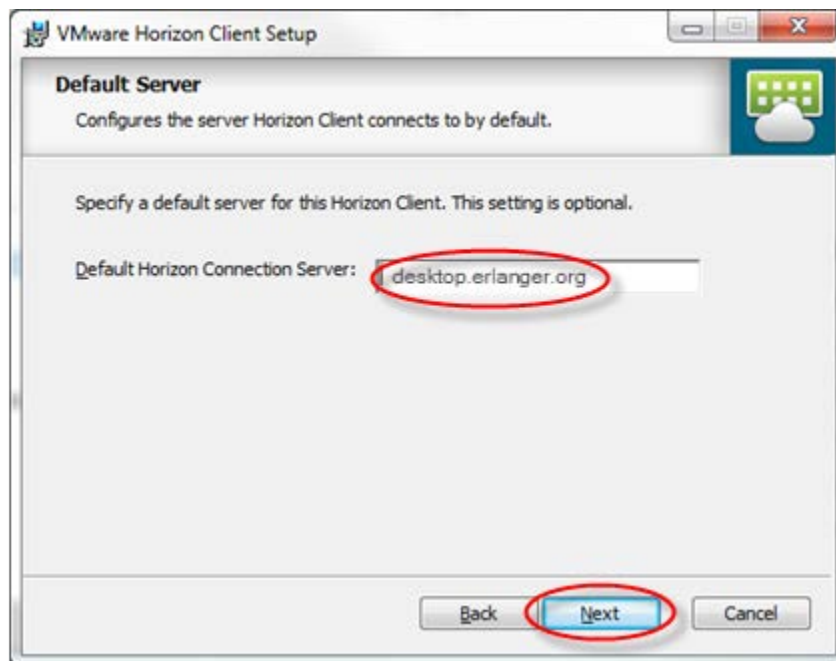


Erlanger Virtual Desktop Setup & Access Guide For Windows

11. Click **NEXT**

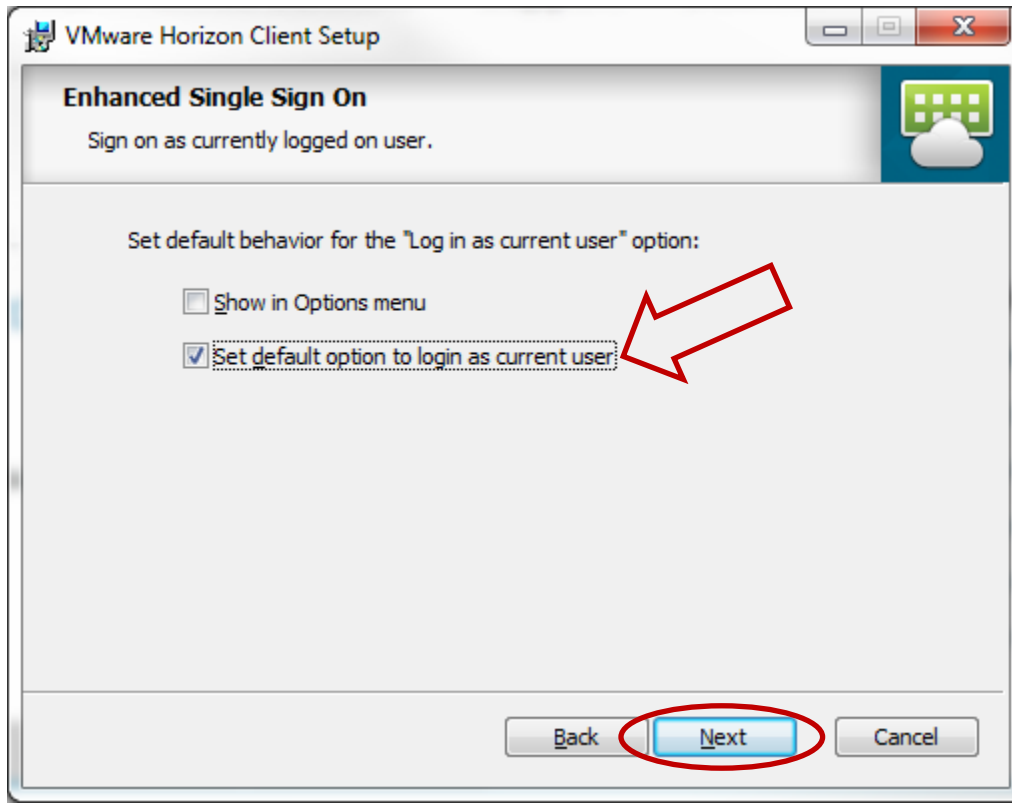


12. Default Horizon Connection Server: desktop.erlanger.org Click **NEXT**.

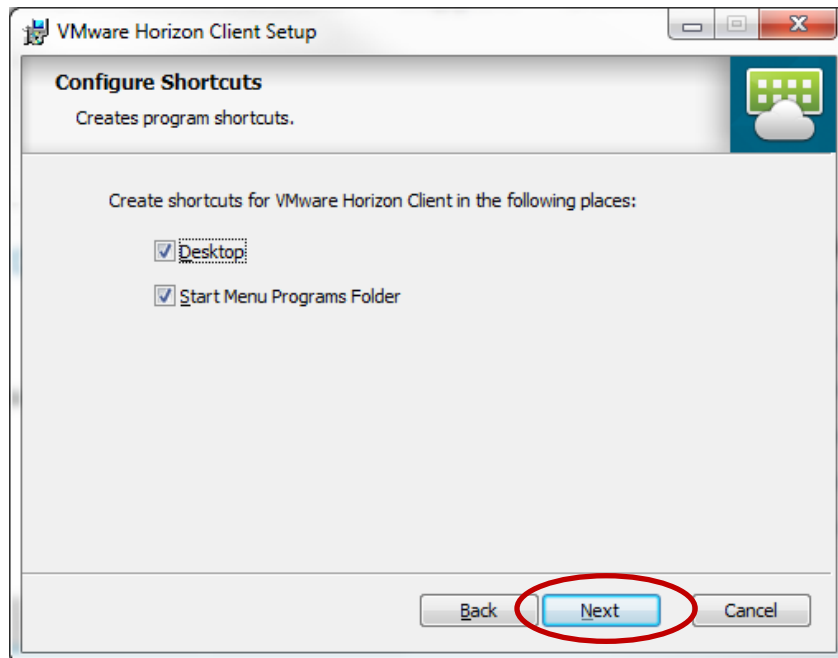


Erlanger Virtual Desktop Setup & Access Guide For Windows

13. Select [SET DEFAULT OPTION TO LOGIN AS CURRENT USER], then Click NEXT.

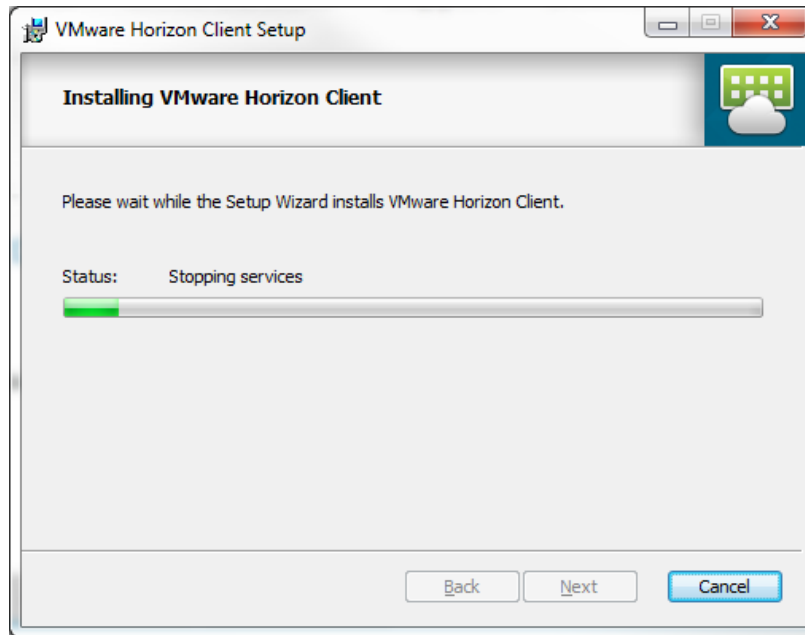


14. Click NEXT.

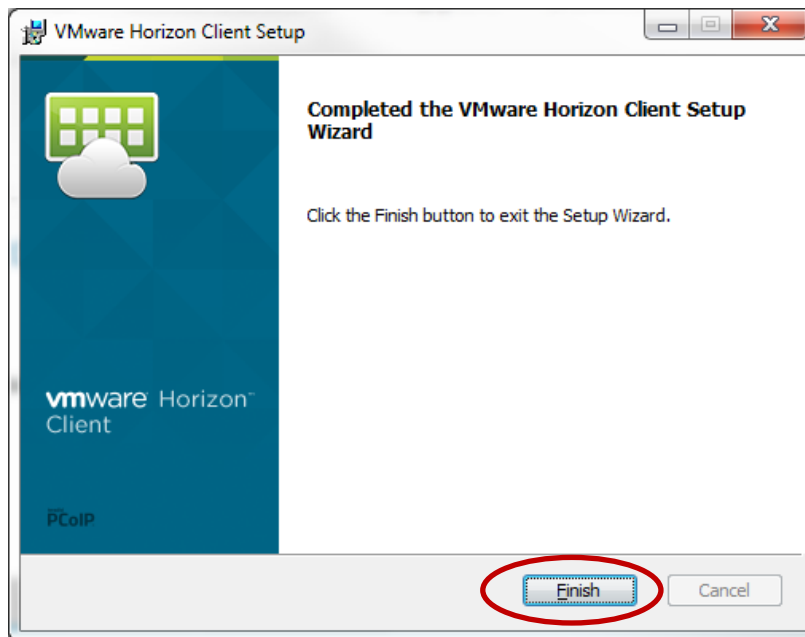


Erlanger Virtual Desktop Setup & Access Guide For Windows

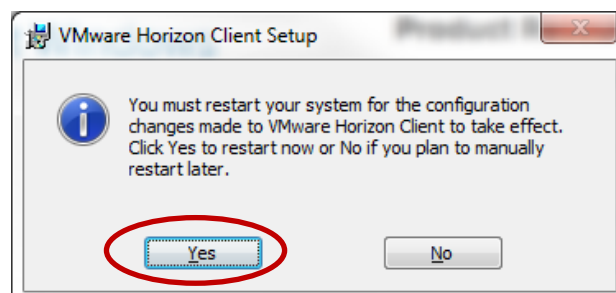
15. Click **INSTALL**. Do **NOT** click cancel.



16. This box will appear when the installation is complete. Click **FINISH**.

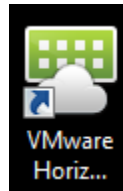


17. Click **YES**. This will restart your computer. Please save any work prior to clicking yes.

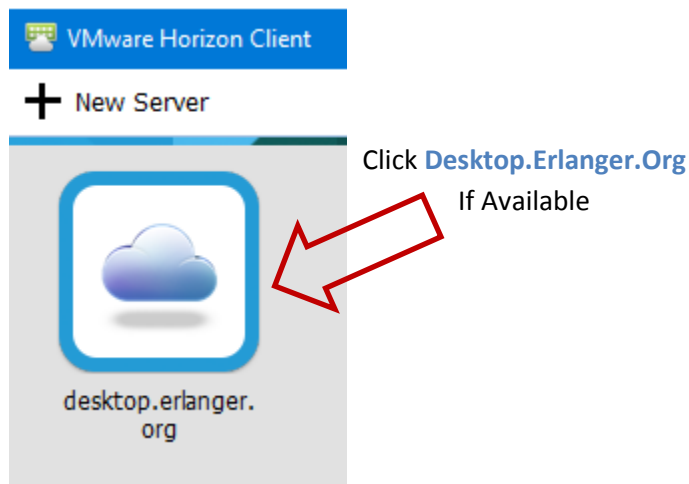


Erlanger Virtual Desktop Setup & Access Guide For Windows

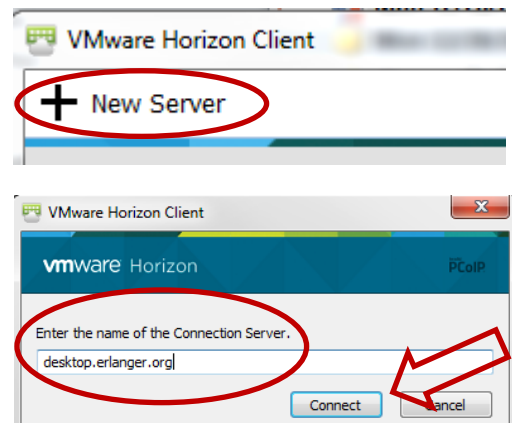
18. Once your workstation has rebooted, log back into your PC as you normally do.
19. Click on the VMware Horizon Icon on your desktop.



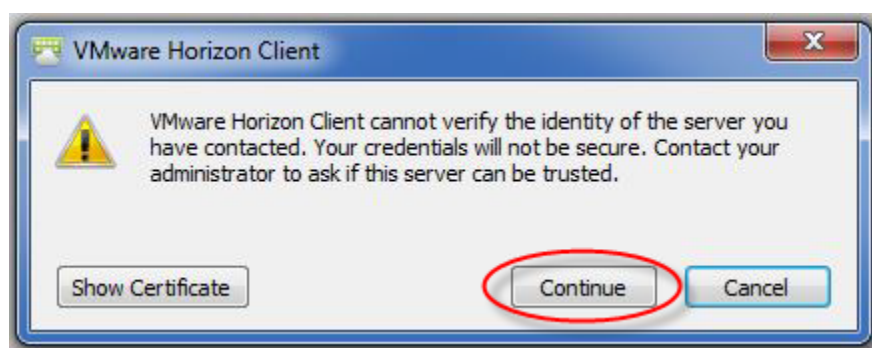
20. The window below will open. Select **desktop.erlanger.org**.
 - ❖ If desktop.erlanger.org is not available, click **+ New Server**.
 - ❖ Enter desktop.erlanger.org and click **CONNECT**.



If **Desktop.Erlanger.Org** is **not**
Available, follow these steps:

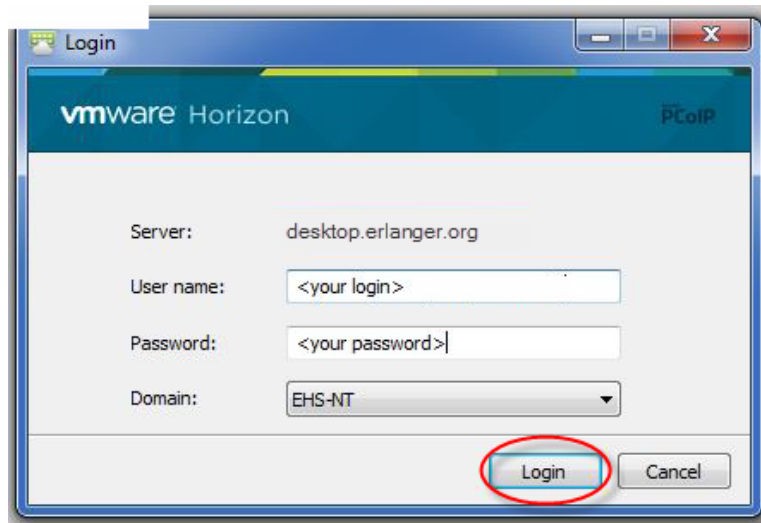


21. If this message is displayed, select **Continue**.

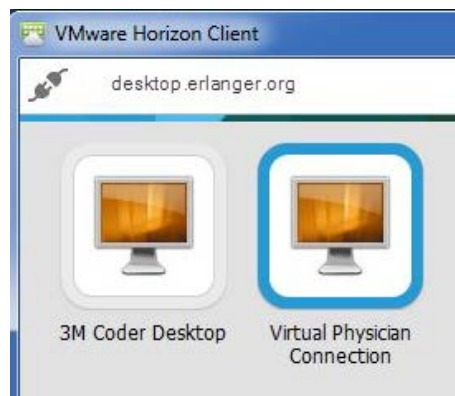


Erlanger Virtual Desktop Setup & Access Guide For Windows

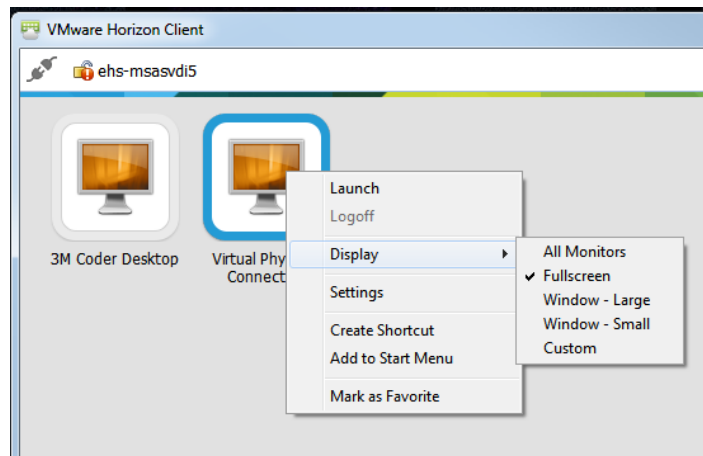
22. Login in with your Erlanger login and password.



23. Click on one of the VDI icons to start.



24. You can change how the window is displayed by right clicking the icon of the system you use as shown below. Click display and select the display type you prefer.



Erlanger Virtual Desktop Setup & Access Guide For Windows

25. When finished, click on the power cord icon to disconnect.

